

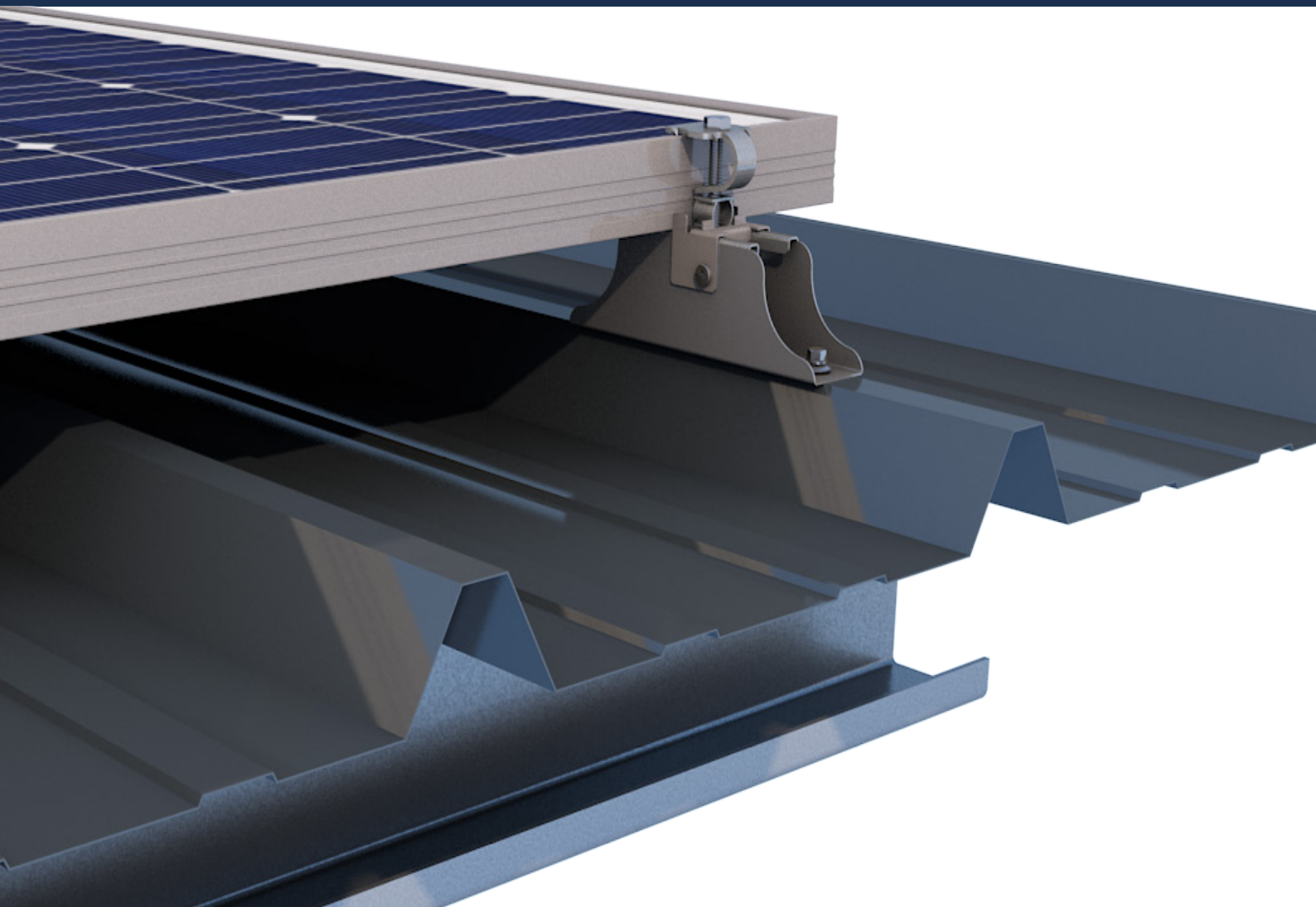
# ADIWATT


Photovoltaics, a matter of expertise

SOLUTION FOR STEEL ROOFING


## PRIMA

The PV integration system optimised for fast, robust installation on steel roofing.



 La Jubarderie, 41 270 Fontaine Raoul

 [info@adiwatt.com](mailto:info@adiwatt.com)

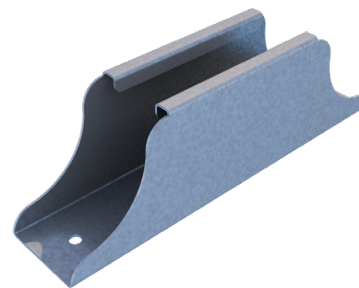
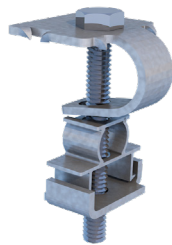
 +33 2 54 23 39 90

ISO 9001:2015  
BUREAU VERITAS  
Certification



# Product benefits

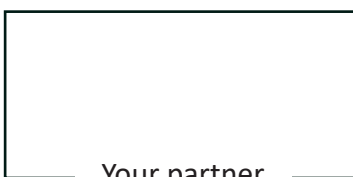
- **Optimised installation:** System designed for simplified installation in less time.
- **Installation aid:** System equipped with a pre-positioner for even faster installation.
- **Compact, ergonomic format:** Easy handling for one-man installation.
- **100% waterproof:** Seal under short-rail and fastenings.
- **Autonomous dimensioning:** [Calculator available for your PRIMA projects](#)
- **Packaging:** optimised packaging, simplified on-site logistics.
- **Maximum adaptability:** Compatible with different types of modules and roof pitches.



## Technical specifications

Field of application	Steel roofing from 0.63mm compliant with DTU 40.35
Roof pitch	From 2.5° to 30°
Installation area	Wind area 1 to 4* - Snow area A1 to C2*
Altitude	900 m max
Distance between purlins	3m max*
Type of modules & orientation	Maximum dimensions: length: 2000 mm; width: 1134 mm Framed, landscape format
Fixing	Stainless steel self-drilling screw
Ventilation under modules	Up to 9.6 cm
Material	Steel with +ZM310 coating to EN10346 standard (Magnelis® or other)
Grounding	VERITAS test report
Certification	ETN

\* to be validated using the online calculator



Your partner



List of pv modules under ETN



Online calculator

Our sales team is available to discuss your projects on [www.adiwatt.com](http://www.adiwatt.com)

